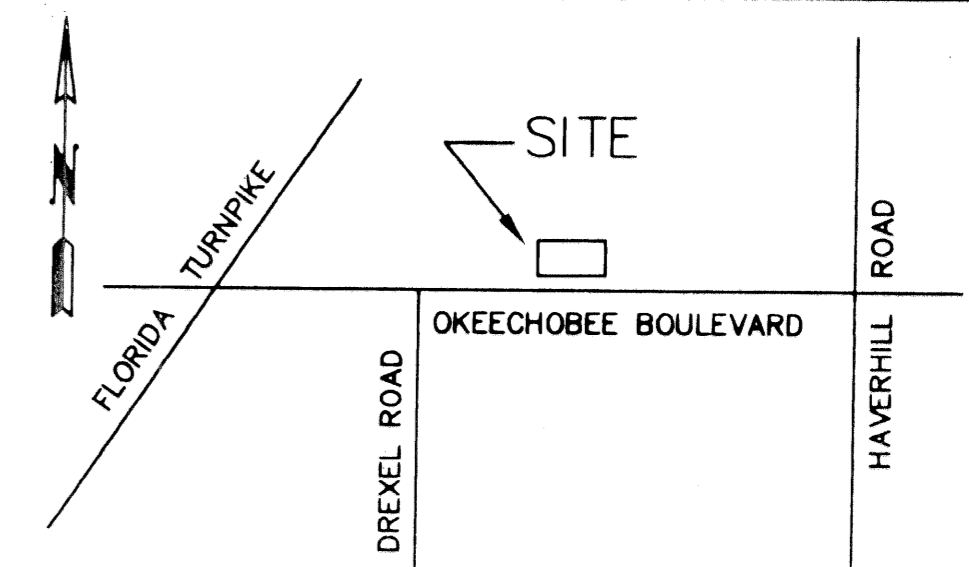


GLADSTONE COMMERCIAL CENTER

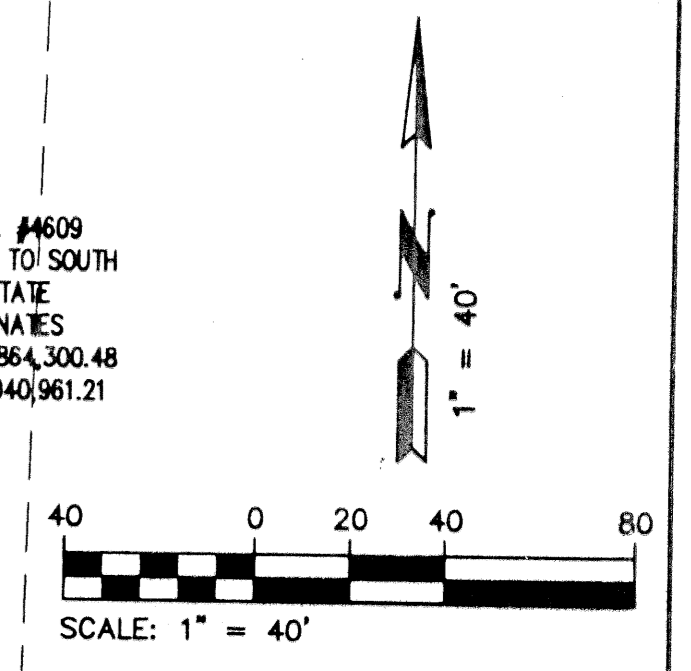
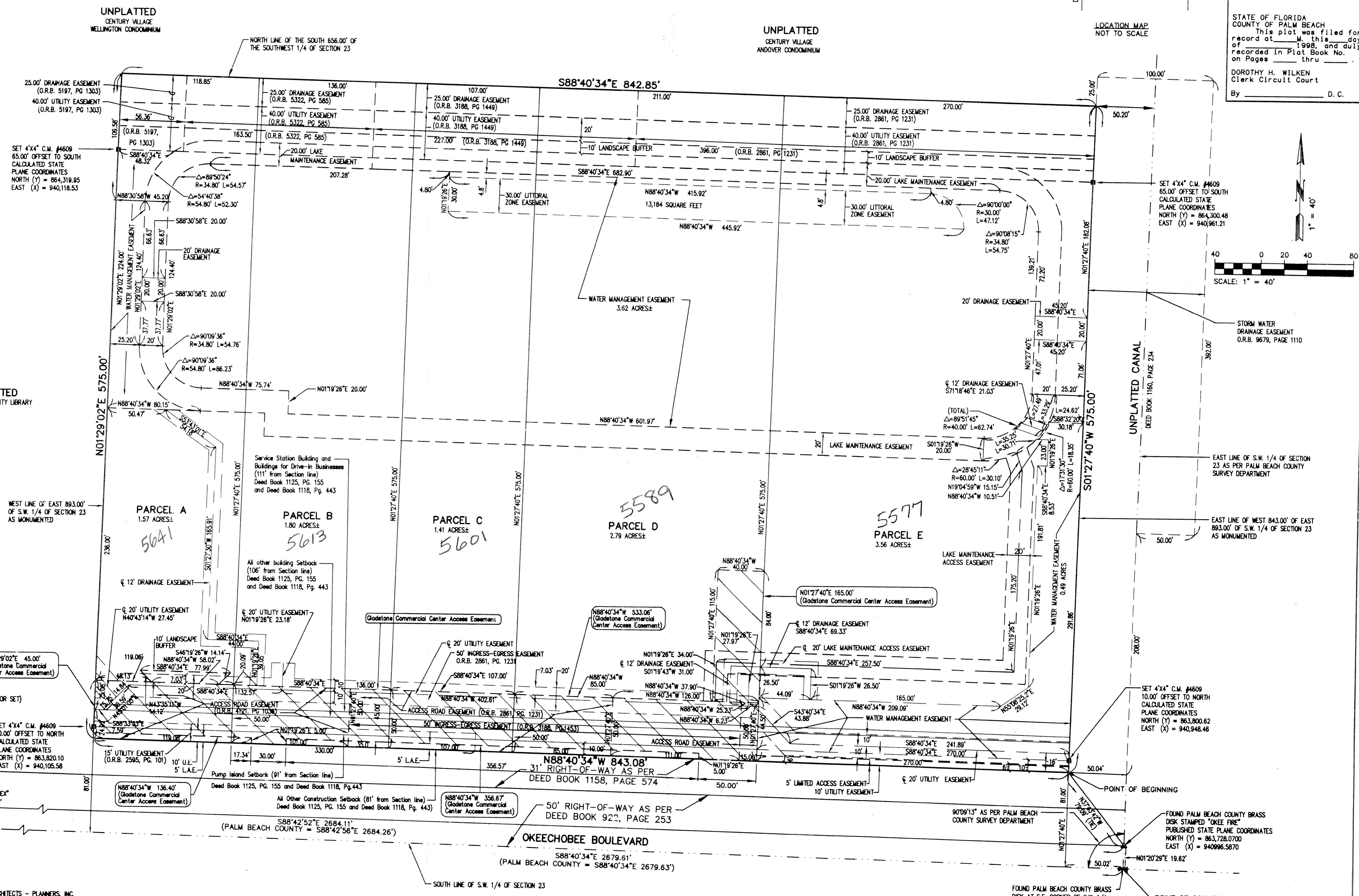
IN PART OF SECTION 23, TOWNSHIP 43 SOUTH, RANGE 42 EAST
PALM BEACH COUNTY, FLORIDA
SHEET NO. 2 OF 2

GEE & JENSON
ENGINEERS - ARCHITECTS - PLANNERS, INC.
WEST PALM BEACH, FLORIDA
MAY 1996



82

STATE OF FLORIDA
COUNTY OF PALM BEACH
This plat was filed for
record at _____ M. this _____ day
of _____ 1998, and duly
recorded in Plat Book No. _____
on Pages _____ thru _____
DOROTHY H. WILKEN
Clerk Circuit Court
By _____ D. C.



TAG 175

SUBDIVISION Gladstone Commercial Center
BOOK 82 PAGE 82
FLOOD MAP # 155/B
ZONING CG
QUAD # 31
ZIP CODE 33411
FED NAME Gladstone Commercial Center

COMPUTED
DRAWN M.HORAN
CHECKED
APPROVED
JOB NO. 95-269.00

THIS INSTRUMENT PREPARED BY:
JAMES A. DAVIS, PSM
FOR GEE & JENSON, ENGINEERS - ARCHITECTS - PLANNERS, INC.
(FLORIDA CERTIFICATE OF AUTHORIZATION NUMBER LB2934)
ONE HARVARD CIRCLE
WEST PALM BEACH, FLORIDA 33409-1923

NOTE: ALL LINES ARE NON-RADIAL UNLESS OTHERWISE NOTED.

FOUND PALM BEACH COUNTY BRASS DISK AT S.E. CORNER OF S.W. 1/4 OF SECTION 23
PUBLISHED STATE PLANE COORDINATES
NORTH (Y) = 863,708.4560
EAST (X) = 940,906.1181